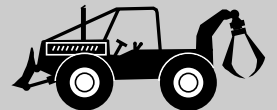
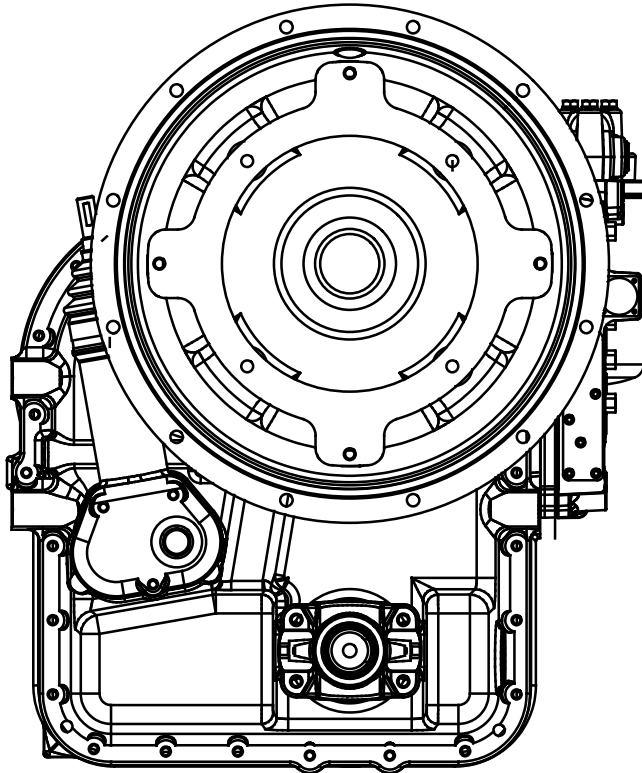


**SPECIFICATIONS**

# **PSR 08**

**Synchro-Shuttle Transmission**

**80 to 115 Hp (60 - 86 Kw)**



***SPICER OFF-HIGHWAY PRODUCTS***



# PSR 08

## GENERAL

4 speed forward / 4 speed reverse  
 2 direction hydraulically controlled clutches.  
 4 range gear synchronisers.

## VARIANTS

	2WD (upper rear output)	4WD (upper rear output & lower front output)
Wet parking brake (SAHR)*	X	X
Mechanical front disconnect (SAHR)*		X

\* SAHR = Spring Applied, Hydraulically Released

## CONVERTER

Housing	SAE 3
Wheel size	12"
Max. Turbine torque	750 Nm

## AUXILIARY PUMP DRIVE

In line with engine	SAE C
Torque Capacity	350 Nm

## RATIOS

### STANDARD (Fast Reverse)

	1 <sup>st</sup> gear		2 <sup>nd</sup> gear		3 <sup>rd</sup> gear		4 <sup>th</sup> gear	
	FWD	REV	FWD	REV	FWD	REV	FWD	REV
Upper rear output	4.93	-4.04	2.89	-2.37	1.41	-1.16	0.71	-0.58
Lower front output	-4.56	3.73	-2.68	2.19	-1.31	1.07	-0.66	0.54

### OPTIONAL

	1 <sup>st</sup> gear		2 <sup>nd</sup> gear		3 <sup>rd</sup> gear		4 <sup>th</sup> gear	
	FWD	REV	FWD	REV	FWD	REV	FWD	REV
Upper rear output	4.93	-4.90	2.89	-2.88	1.41	-1.40	0.71	-0.71
Lower rear output	-4.56	4.54	-2.68	2.66	-1.31	1.30	-0.66	0.66

## WEIGHT - DIMENSIONS - OIL

Weight (dry)	290 Kg
Oil Capacity	9 liter
Integral Oil Filter	Spin-on
Length (face converter - Axle C <sub>line</sub> )	593mm
Max. Width	553mm
Max. Height	673mm
Max. Vertical Drop(C <sub>line</sub> Engine - C <sub>line</sub> Axle)	341mm



**SPICER OFF-HIGHWAY PRODUCTS DIVISION**

Ten Briele 3 B-8200 Sint-Michiels Brugge, Belgium Tel. + 32 (0)50 402 211 Fax. +32 (0)50 402 402

ALL APPLICATIONS MUST BE APPROVED BY THE APPLICATION ENGINEERING DEPARTMENT  
 SPECIFICATIONS and/or DESIGN ARE SUBJECT TO CHANGE WITHOUT NOTICE OR OBLIGATION